

Multi Purpose Vessel Geo Explorer

Survey / Crew / Mail / Guard / Patrol and Project Staff Vessel

Type 'No Limit 1640'



LR Class 100A1 SSC PATROL MONO HSC G2 LMC up to 30 Nm

Owner Geo Plus Materieel BV

Name Geo Explorer
 Port of registry Eemshaven
 Flag Netherlands
 Call Sign PBJJ
 MMSI 244863000
 IMO 9405069
 Building Year 2007
 LOA 16.40 m
 LPP 14.66 m
 Gross Tonnage 34.0 t
 Moulded Breadth 4.32 m
 Total Breadth incl. Tubes 5.20 m
 Draught Summer 1.10 m
 Height with mast down 3.50 m
 Engines MAN
 No. of Engines / Props 2 pcs
 Engine power 2x 412 kW
 (2x 560 hp)
 Maximum Speed 18 kts
 Generator + inverter 12 kW
 Boardnet 24 V/230 V
 Passenger Seats 12 pers
 Bedspace / 2 Cabins 2x 2 pers
 Fuel Tank Capacity 4000 ltrs
 Fresh Water tank Capacity 1000 ltrs
 Grey Water /Black Water tank Capacity 400 ltrs



Toilet, shower and complete kitchen on board;
 Wheelhouse Crewseats, Recaro-chairs type North Sea;
 Airco and heating in all compartments

Lifting Eyes are available and vessel can be lifted on board of a barge for e.g. transport to project site. Also cradle with container locks available.

Safety Equipment

VHF Sailor RT-5022	2 pcs	Epirb MT 400	1 pcs
Radar Koden MDC 1710P	1 pcs	Tronsart	1 pcs
GPS Navigator Koden KGP-920	1 pcs	Personal Safety Gear	16 pers
GPS Compass Koden KGC-1	1 pcs	Life Rafts	4x 8 pers
Forward Looking Sonar Echopilot platinum	1 pcs		
Furuno Navtex	1 pcs	Trading Area 30 Nm / Operating Crew	2 pers
Automatic Identification System (AIS)	1 pcs	P.L.C. Control / Operating System	

Hydrographic Equipment

Multibeam (hull mounted)	Kongsberg	EM 3002D	300 kHz	1 pcs
Single Beam (hull mounted)	Kongsberg	EA 400	38/200 kHz + 710 kHz	1 pcs
Gyro & integral motion sensor	IXSEA	Hydrins II		1 pcs
Hydrographic Positioning	Magellan	Aquarius 02	LRK/GPS or RTK/GPS	1 pcs
	AD Navigation	DC201	GPS/GLONASS RTK QPoS	1 pcs
Sound Velocity Probe	Reson	SVP 14/15		1 pcs
Sound Velocity Sensor	Valeport	Mini SVS		1 pcs
Hydrographic Software	QPS/Reson	QINSy 8/PDS2000		1 pcs

Hydrographic Mapping

The different hydrographic software programs (GIS and Cad) make it possible to give instant 3-D information / Client presentations.

Project Staff Vessel and Workboat

Besides having the possibility going offshore with e.g. Client Reps and/or Project Staff the vessel can be used for fast survey work, fast deliveries of crew, mail or e.g. maintenance equipment (cruising speed 18 knots) and as Guard Vessel or Patrol Boat.

Contact: loots@geoplus.nl or phone +31(0)6 55 73 59 59
<http://www.geoplus.nl>

Few activities of the Geo Explorer

Felixtowe (England)

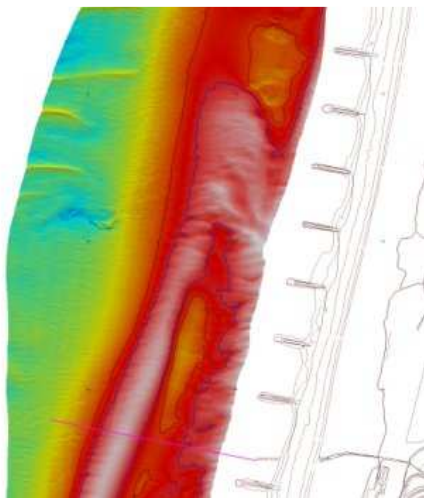
Multibeam survey. Client: Boskalis Westminster.

Hebrides (Scotland)

Multibeam survey. Client: MMT Sweden.

Den Helder – Petten (The Netherlands)

Multibeam survey and crew tender. Client: Van Oord.



Contact: loots@geoplus.nl or phone +31(0)6 55 73 59 59
<http://www.geoplus.nl>