

Multi Purpose Vessel Geo Motion

Survey / Crew / Mail / Guard / Patrol and Project Staff Vessel

Type 'No Limit 1640'



LR Class 100A1 SSC PATROL MONO HSC G2 LMC up to 30 Nm

Owner Geo Tender III BV

Name Geo Motion
 Port of registry Eemshaven
 Flag The Netherlands
 Call Sign PBUJ
 MMSI 245225000
 IMO 9606857
 Building Year 2011
 LOA 16.70 m
 LPP 14.66 m
 Gross Tonnage 36 t
 Moulded Breadth 4.50 m
 Total Breadth incl. Tubes 5.26 m
 Draught Summer 1.30 m
 Height with mast down 3.50 m
 Engines Volvo
 No. of Engines / Props 2 pcs
 Engine power Volvo Penta D13 2x 515 kW
 (2x 700 hp)
 Maximum Speed 22.0 kts
 Generator + inverter 12 kVA
 Boardnet 24 V/230 V
 Passenger Seats 12 pers
 Bedspace / 2 Cabins 2 pers
 Fuel Tank Capacity 4000 ltrs
 Fresh Water tank Capacity 900 ltrs
 Grey Water /Black Water tank Capacity 400 ltrs



Toilet, shower and complete kitchen on board;
 Wheelhouse Crew seats, Norsap NS800 Sea;
 Airco and heating in all compartments

Lifting Eyes are available and vessel can be lifted on board of a barge for e.g. transport to project site. Also cradle with container locks available. A-frame suitable for lifting 100 kg is on the aft deck.

* Renewable energy: low sulphur fuel + LED illumination.

Safety Equipment

VHF Sailor RT-5022	2 pcs	VHF radiotelephone Entel HT 649	1 pcs
Radar Koden MDC 1710P	1 pcs	Epirb MT 403FF	1 pcs
GPS Navigator Koden KGP-920	1 pcs	Survival craft SART McMurdo S4	1 pcs
GPS Compass Comnav	1 pcs	Personal Safety Gear	16 pers
Forward Looking Sonar Echopilot platinum	1 pcs	Life Rafts	2x 16 pers
Furuno Navtex	1 pcs	Trading Area 30 Nm / Operating Crew	2 pers
Automatic Identification System (AIS)	1 pcs	C-Map Charts	

Hydrographic Equipment

Multibeam (hull mounted)	Kongsberg	EM2040	0,5x 1°DH	200/300/400 kHz	1 pcs
Single Beam (hull mounted)	Kongsberg	EA 400		38/200 kHz	1 pcs
Inertial Navigation system	IXSEA	Hydrins III		Gyro & Motion	1 pcs
Hydrographic Positioning	Trimble	SPS852		GPS/GLONASS RTK/DGPS	1 pcs
Sound Velocity Probe	Reson	SVP 14/15			1 pcs
Sound Velocity Sensor	Valeport	Mini SVS			1 pcs
Hydrographic Software	QPS/Reson	QINSy 8/PDS2000			1 pcs

Hydrographic Mapping

The different hydrographic software programs (GIS and CAD) make it possible to give instant 3-D information / Client presentations.

Project Staff Vessel and Workboat

Besides having the possibility going offshore with e.g. Client Reps and/or Project Staff the vessel can be used for fast survey work, fast deliveries of crew, mail or e.g. maintenance equipment (cruising speed 22 knots) and as Guard Vessel or Patrol Boat.

Contact: loots@geoplus.nl or phone +31(0)6 55 73 59 59
<http://www.geoplus.nl>

Few activities of the Geo Motion

Texel (The Netherlands)

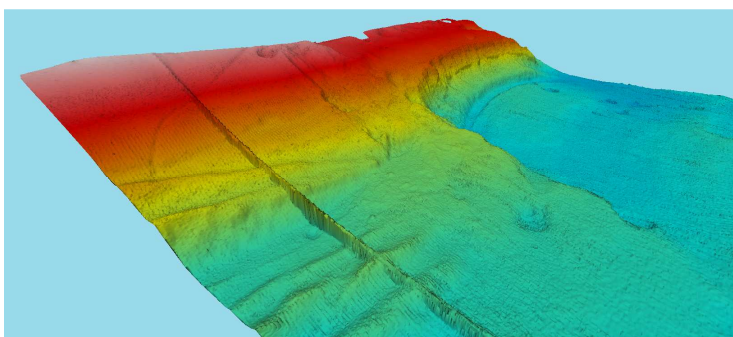
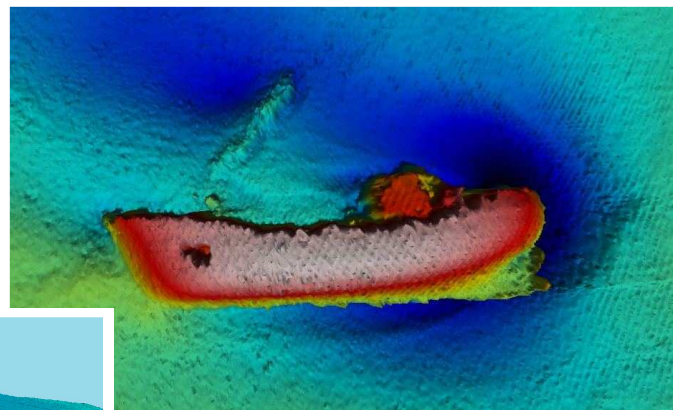
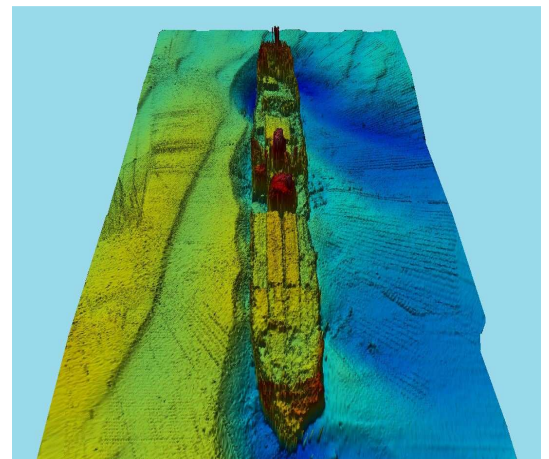
Multibeam survey. Client: Boskalis.

North Sea

Multibeam survey. Client: Heerema Marine Contractors.

Hoek van Holland (The Netherlands)

Multibeam survey and crew tender. Client: Van Oord.



Contact: loots@geoplus.nl or phone +31(0)6 55 73 59 59
<http://www.geoplus.nl>