

Multi Purpose Vessel Geo Solution

Artic / Survey / Crew / Mail / Guard / Patrol and Project Staff Vessel

Type 'No Limit 1500'



MCA Class Category 2 up to 60 Nm

Owner Geo Tender I BV

Name Geo Solution
 Port of registry London
 Flag British
 Call Sign 2 CJT4
 MMSI 235073396
 Building Year 2002
 LOA 15.00 m
 LPP 12.40 m
 Gross Tonnage 28.0 t
 Moulded Breadth 4.05 m
 Total Breadth incl. Tubes 4.85 m
 Draught Summer 0.95 m
 Height mast down 3.80 m
 Height mast up 6.70 m
 Engines VOLVO
 No. of Engines / Props 2 pcs
 Engine power 2x 353 kW
 (2x 480 hp)
 Maximum Speed 18 kts
 Bowthruster 1569 N
 Generator + inverter 7.7 kW/4.5 kW
 Boardnet 24 V/230 V
 Passenger Seats 12 pers
 Bedspace / 2 Cabins/Couch 3 pers
 Fuel Tank Capacity 2500 ltrs
 Fresh Water tank Capacity 1000 ltrs
 Grey Water / Black Water tank Capacity 400 ltrs



2x Toilet/shower and complete kitchen on board;
 2x Captains chair, Zwaardvis type San Diego;
 Airco and heating in all compartments

The vessel is fitted with 4 lifting eyes and can be lifted on board of a barge e.g. for transport to a project site area. Also cradle with container locks available.

Safety Equipment

VHF Debeg DSC A	1 pcs	EPIRB	1 pcs
Radar Raytheon RL 70	1 pcs	SART	1 pcs
Radar Koden 1541	1 pcs		
GPS Navigator Raytheon	1 pcs	Personal Safety Gear	15 pers
GPS Compass Raymarine	1 pcs	Life Rafts VIKING	2x 8 pers
Forward Looking Sonar Echopilot platinum	1 pcs		
Portable Radio GMDSS	1 pcs	Trading Area 60 Nm / Operating Crew	6 pers
AIS system Furuno FA 150	1 pcs	it is possible to remain at sea in excess 24 hrs	
Iridium Satellite Telephone	1 pcs		

Hydrographic Equipment

Multibeam (hull mounted)	Kongsberg	EM 3002D	300 kHz	1 pcs
Single Beam (hull mounted)	Kongsberg	EA 400	33/210 kHz, 710 kHz + 200 kHz narrow beam	1 pcs
Gyro & integral motion sensor	IXSEA	Octans 4		1 pcs
Hydrographic Positioning	AD Navigation	DC201	GPS/GLONASS RTK QPoS	1 pcs
Sound Velocity Probe	Reson	SVP 14/15		1 pcs
Sound Velocity Sensor	Valeport	Mini SVS		1 pcs
Hydrographic Software	QPS/Reson	Optional: QINSy 8 or PDS2000		1 pcs

Hydrographic Mapping

The different hydrographic software programs (GIS and Cad) make it possible to give instant 3-D information / Client presentations.

Project Staff Vessel and Workboat

Besides having the possibility going offshore with e.g. Client Reps and/or Project Staff the vessel can be used for fast survey work, fast deliveries of crew, mail or e.g. maintenance equipment (cruising speed 18 knots) and as Guard Vessel or Patrol Boat.

Contact: loots@geoplus.nl or phone +31(0)6 55 73 59 59
<http://www.geoplus.nl>

Few activities of the Geo Solution

Yamal (Siberia)

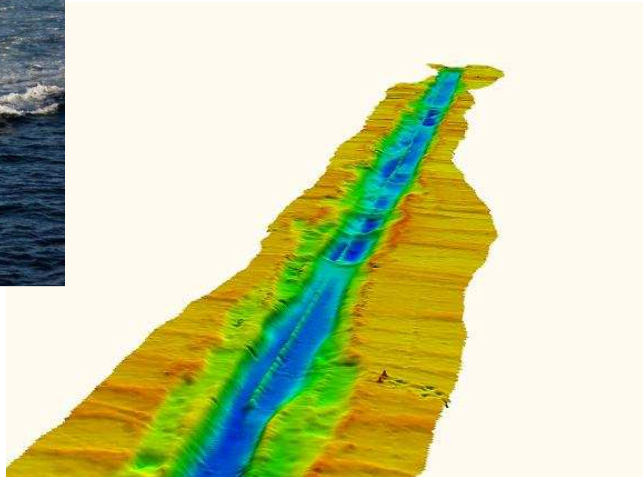
Multibeam survey. Client: van Oord.

Hoek van Holland – Scheveningen (The Netherlands)

Multibeam survey for sand supply. Client: Delflandse Kust.

Den Helder – Petten (The Netherlands)

Crew tender. Client: Van Oord.



Pipeline at the bottom of the sea



Fast and easy mobilisation

Contact: loots@geoplus.nl or phone +31(0)6 55 73 59 59
<http://www.geoplus.nl>