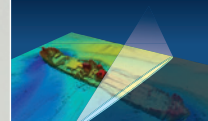


- + Survey vessel
- + Fast crew tender
- + Multibeam EM 2040 C
- + Comfortable work environment
- + Hoisting eyes



GEO PLUS
NETHERLANDS



Geo Motion

Survey Vessel

Classification / Flag / Registration

Vessel Name	: Geo Motion
Owner	: Geo Tender III B.V.
Flag	: Dutch
Call sign	: PBUJ
IMO	: 9606857
Port of registry	: Eemshaven
Built	: 2011
Builder	: No Limit Ships B.V.
Range	: 30 nautical miles
Classification	: Lloyd's Register class 100A1 SSC PATROL MONO HSC G2 LMC up to 30 Nm
GMDSS	: A1 + A2

General dimensions

Length overall	: 16.70 m
Length between perpendiculars	: 14.66 m
Airdraft	: 3.50 m
Breadth moulded	: 4.50 m
Breadth overall	: 5.26 m
Draft	: 1.30 m
Gross Tonnage	: 36 tons
Light ship weight	: 32 tons

Geo Plus BV

Eenrumermaar 2
9735 AD Groningen (NL)
P.O. Box 107
9700 AC Groningen
☎ +31 (0) 50 588 7272
info@geoplus.nl
www.geoplus.nl

Accommodation

Passengers	: 12 persons
Bedspace / 2 Cabins	: 2x1 persons

- Toilet, shower and complete galley on board
- Wheelhouse Crew seats, Norsap NS800 Sea
- Airco and heating in all compartments

Speed

Speed	: max. 18 knots (C-rating) at 100% load
Survey speed	: 8-10 knots

Capacities

Fuel	: 4000 liters
Fresh water	: 900 liters
Grey/black water	: 400 liters

Survey Equipment

Multibeam	: Kongsberg EM2040C (hull mounted), dual transducer, 200/300/400 kHz
Singlebeam	: Kongsberg EA 400 (hull mounted), 38/200 kHz
Gyro/Motion reference	: IXSEA Hydrins III, Gyro & Motion
Hydr. Positioning	: Trimble SPS852, GPS/GLONASS RTK/DGPS
Sound Velocity Probe	: Reson SVP14/15
Sound Velocity Sensor	: Valeport Mini SVS
Hydrographic Software	: QINSy
Hydrographic computer	
UPS	

Mobile survey equipment is available for quick installation:

- CNav-GPS
- Over the side mounted pole
- 19" rack

Navigation

- Radar Koden MDC 1710P
- GPS Navigator Koden KGP-920
- GPS Compass Comnav
- Forward Looking Sonar Echopilot platinum
- Furuno Navtex
- Automatic Identification System (AIS)

Communication / Connectivity

- 2x VHF Sailor RT 5022
- VHF radiotelephone Entel HT 649
- EPIRB MT 403FF
- Boardnet 24V / 230V

Machinery / Propulsion

Main diesel engines	: Volvo 2x 515 kW (2x 700hp)
Generator + inverter	: 17 kW + 9 Kw

Multifunctional work deck

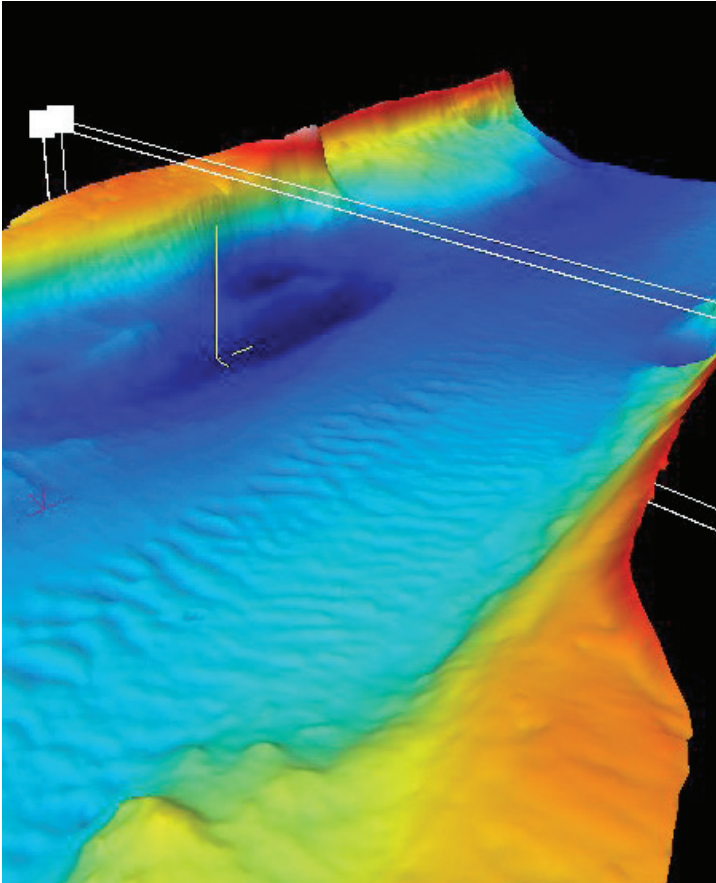
The vessel is equipped with hoisting eyes for fast mobilisation/transport purposes. Also transport cradle with container locks is available. A-frame suitable for lifting 100 kg is on the aft deck.

Details on this specification are subject to change without notice.

www.geoplus.nl

Customized
Hydrographic services
worldwide





Additional Facilities

Besides having the possibility to go off-shore for fast survey work, the vessel can also be used for client rep/project staff purposes, as guard vessel or for fast deliveries of parcels, spares and crew.

Sustainable Features

Low sulphur fuel + LED illumination.

Safety

- Personal Safety Gear : 16 persons
- Life Rafts : 2x 8 persons
- Trading Area : 30 Nm
- Marine Crew : 2 persons

Geo Plus BV
Eenrumermaar 2
9735 AD Groningen (NL)
P.O. Box 107
9700 AC Groningen
☎ + 31 (0) 50 588 7272
info@geoplus.nl
www.geoplus.nl

Multifunctional survey vessel

Easy to install project specific sensors

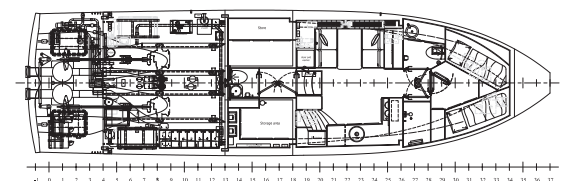
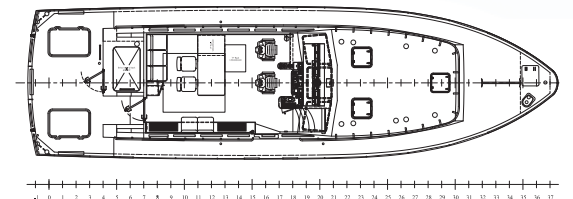
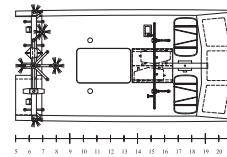
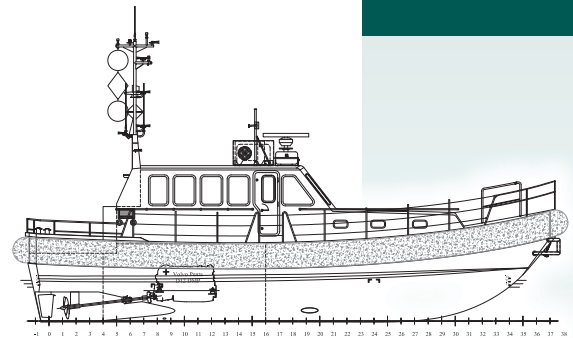
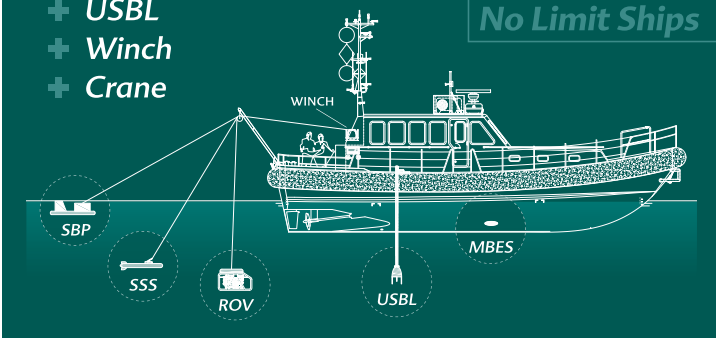
For instance:

- + ROV (inspection class)
- + Multibeam
- + Side Scan Sonar
- + Magnetometer
- + Subbottom profiler
- + USBL
- + Winch
- + Crane

Installation:

- + A-frame
- + Moonpool
- + Over the side
- + Hull mounted

No Limit Ships



Details on this specification are subject to change without notice.

