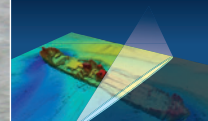


- + Survey vessel
- + Fast crew tender
- + Multibeam
- + Comfortable work environment
- + Hoisting eyes



GEO PLUS
NETHERLANDS



Geo Solution

Survey Vessel

Classification / Flag / Registration

Vessel Name	: Geo Solution
Owner	: Geo Tender I B.V.
Flag	: British
Call sign	: 2CJT4
IMO	: NL-NOL15005J201
Port of registry	: London
Built	: 2002
Builder	: No Limit Ships B.V.
Range	: 60 nautical miles
Classification	: RINA Class, Category 2 up to 60 Nm

General dimensions

Length overall	: 15.00 m
Length between perpendiculars	: 12.40 m
Airdraft	: 3.80 m
Height (<i>mast up</i>)	: 6.70 m
Breadth moulded	: 4.05 m
Breadth overall	: 4.85 m
Draft	: 0.95 m
Gross Tonnage	: 28 tons
Light ship weight	: 21 tons

Geo Plus BV
 Eenrumermaar 2
 9735 AD Groningen (NL)
 P.O. Box 107
 9700 AC Groningen
 ☎ +31 (0) 50 588 7272
 info@geoplus.nl
 www.geoplus.nl

Accommodation

Passengers	: 12 persons
Bedspace / 2 Cabins	: 2x1 persons

- Toilet, shower and complete galley on board
- 2x Captains chair, Zwaardvis type San Diego
- Airco and heating in all compartments

Speed

Speed	: max. 14 knots (C-Rating)
Survey speed	: 8-10 knots

Capacities

Fuel	: 2500 liters
Fresh water	: 1000 liters
Grey/black water	: 400 liters

Survey Equipment

Multibeam	: Kongsberg EM3002D (hull mounted), 300 kHz
Singlebeam	: Kongsberg EA 400 (hull mounted), 33/210 kHz, 710 kHz + 200 kHz narrow beam
Gyro/Motion reference	: IXSEA Hydrins III
Hydr. Positioning	: Trimble SPS885 GPS/Glonass, RTK/DGPS
Sound Velocity Probe	: Reson SVP14/15
Sound Velocity Sensor	: Valeport Mini SVS
Hydrographic Software	: QINSy
Hydrographic computer	
UPS	
Moonpool	: ø 70 cm

Mobile survey equipment is available for quick installation:

- CNav-GPS
- Over the side mounted pole
- 19" rack
- Full Foamed Fenders (2016)

Navigation

- Radar Raytheon RL 70
- Radar Koden 1541
- GPS Navigator Raytheon
- GPS Compass Raymarine
- Forward Looking Sonar Echopilot platinum
- Portable Radio GMDSS
- AIS system Furuno FA 150

Communication / Connectivity

- VHF Debeg DSC A
- Iridium Satellite Telephone
- EPIRB
- SART
- Boardnet 24V / 230V

Machinery / Propulsion

Main diesel engines	: Volvo 2x 353 kW (2x 480 hp)
Generator + inverter	: 7.7 kW/5 kW

Multifunctional work deck

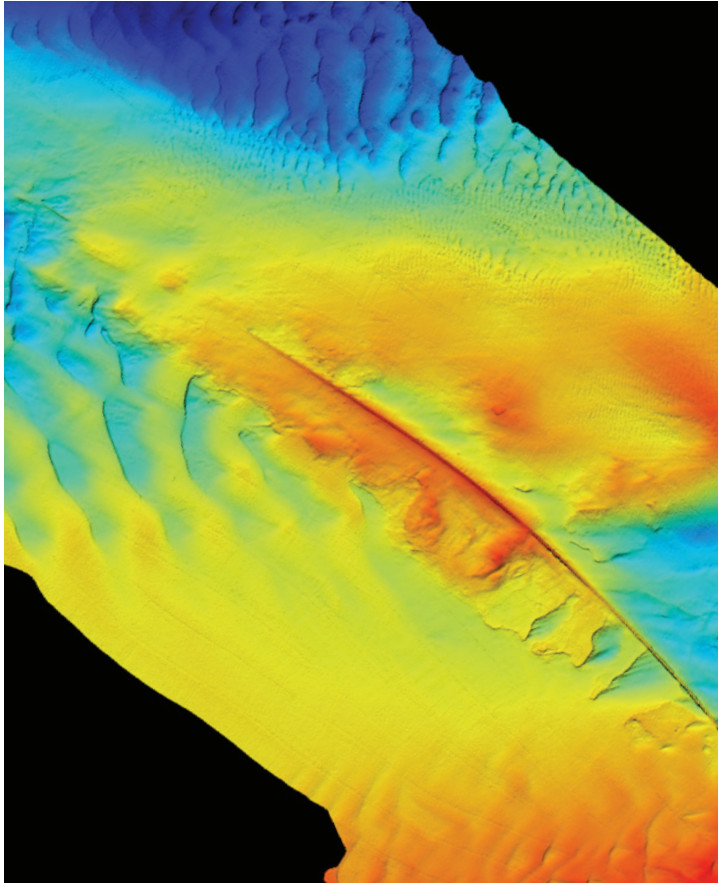
The vessel is equipped with hoisting eyes for fast mobilisation/transport purposes. Also transport cradle with container locks is available.

Details on this specification are subject to change without notice.

www.geoplus.nl

Customized
Hydrographic services
worldwide





Additional Facilities

Besides having the possibility to go off-shore for fast survey work, the vessel can also be used for client rep/project staff purposes, as guard vessel or for fast deliveries of parcels, spares and crew.

Safety

Personal Safety Gear : 15 persons
 Life Rafts VIKING : 2x 8 persons
 Trading Area : 60 Nm
 Marine Crew : 2 persons

Special

Fast mobilization by road transportation.

Geo Plus BV
 Eenrumermaar 2
 9735 AD Groningen (NL)
 P.O. Box 107
 9700 AC Groningen
 ☎ + 31 (0) 50 588 7272
 info@geoplus.nl
 www.geoplus.nl

Multifunctional survey vessel

Easy to install project specific sensors

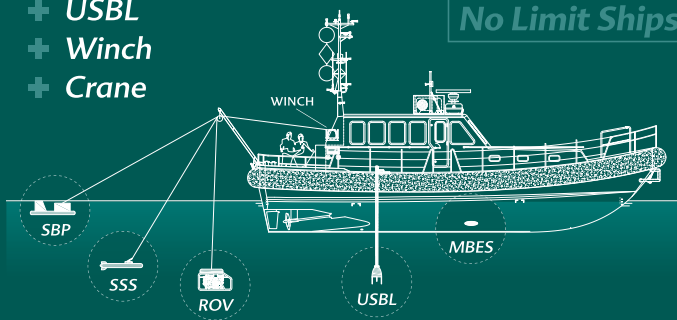
For instance:

- + ROV (inspection class)
- + Multibeam
- + Side Scan Sonar
- + Magnetometer
- + Subbottom profiler
- + USBL
- + Winch
- + Crane

Installation:

- + A-frame
- + Moonpool
- + Over the side
- + Hull mounted

No Limit Ships



Geo Solution:
For six consecutive years in Siberia



Details on this specification are subject to change without notice.

