

- + Survey vessel
- + Fast crew tender
- + Multibeam
- + Comfortable work environment
- + Hoisting eyes

No Limit Ships

**GEO PLUS**  
NETHERLANDS



Geo Solution

# Survey Support



Geo Connection



Geo Explorer



Geo Motion

**Geo Plus BV**  
Eenrumermaar 2  
9735 AD Groningen (NL)  
P.O. Box 107  
9700 AC Groningen  
☎ +31 (0) 50 588 7272  
info@geoplus.nl  
www.geoplus.nl

## Multifunctional survey vessel

Easy to install project specific sensors

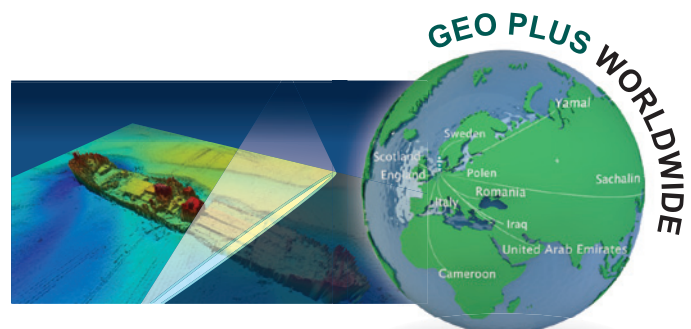
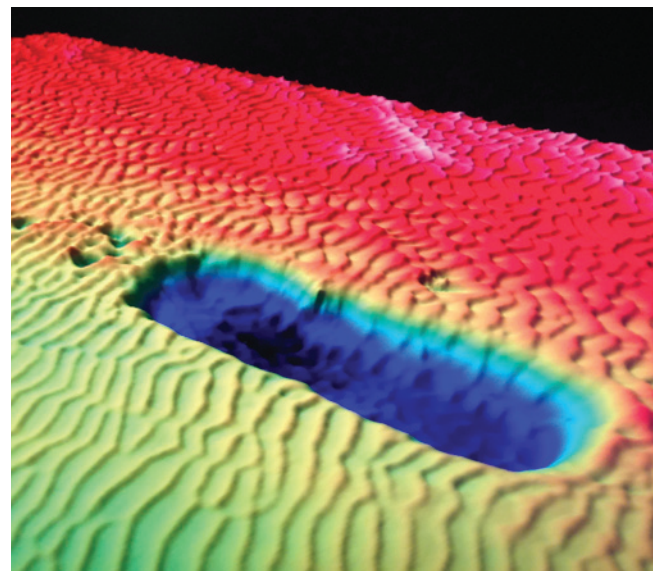
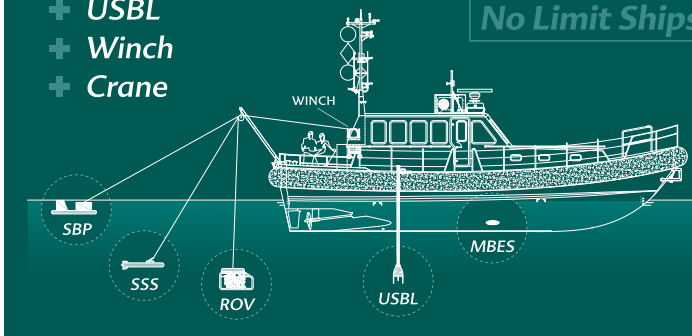
For instance:

- + ROV (inspection class)
- + Multibeam
- + Side Scan Sonar
- + Magnetometer
- + Subbottom profiler
- + USBL
- + Winch
- + Crane

Installation:

- + A-frame
- + Moonpool
- + Over the side
- + Hull mounted

No Limit Ships



Details on this specification are subject to change without notice.

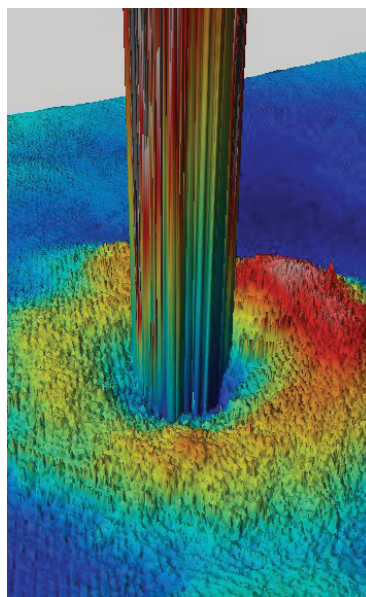
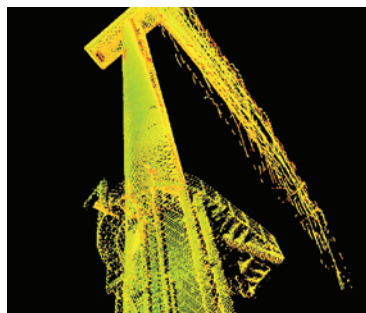
www.geoplus.nl

Customized  
Hydrographic services  
worldwide





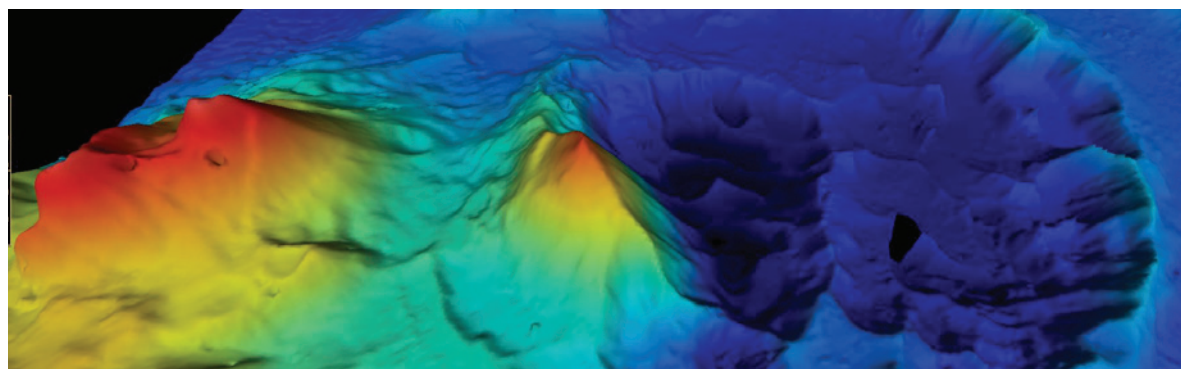
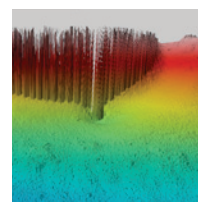
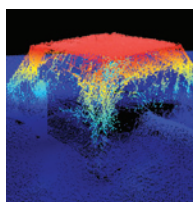
Vessel Specifications	Geo Motion	Geo Connection	Geo Explorer	Geo Solution
Port of registry	Eemshaven	Eemshaven	Eemshaven	London
Flag	Dutch	Dutch	Dutch	British
Call sign	PBUJ	PCFZ	PBJJ	2CJT4
IMO	9606857	9590371	9405069	NL-NOL15005J201
Building year	2011	2010	2007	2002
Range	30 nm	30 nm	30 nm	60 nm
LOA	16.70	16.70	16.40	15.00
Gross Tonnage	36 tons	36 tons	34 tons	22 tons
Total breadth incl. tubes	5.26 m	5.26 m	5.20 m	4.85 m
Draft	1.30 m	1.30 m	1.20 m	0.95 m
Airdraft	3.50 m	3.50 m	3.50 m	3.80 m
Engines	Volvo	Volvo	MAN	Volvo
Engines / props	2 pcs	2 pcs	2 pcs	2 pcs
Engine power	2x 515kW (2x 700 hp)	2x 478kW (2x 650hp)	2x 412kW (2x 560 hp)	2x 353kW (2x 480hp)
Maximum speed	18 kts	18 kts	14 kts	14 kts
Passenger Seats	12 pers	12 pers	12 pers	12 pers
Accommodation 2 cabins	2 pers	2 pers	2 pers	2 pers
Fuel Tank Capacity	4000 ltrs	4000 ltrs	4000 ltrs	2500 ltrs
Deckspace	12 m <sup>2</sup>	12 m <sup>2</sup>	12 m <sup>2</sup>	15 m <sup>2</sup>
A-frame	A-frame suitable for lifting 100 kg	A-frame suitable for lifting 100 kg	-	-
Specials	Low sulphur fuel LED	Low sulphur fuel LED	Moonpool ☐ 78 x 63 cm	Moonpool ø70 cm



Survey Equipment	Geo Motion	Geo Connection	Geo Explorer	Geo Solution
Multibeam	EM 2040C Dual	EM 3002D	EM 2040C Dual	EM 3002D
Singlebeam (dual frequency)	EA 400	EA 400	EA 400	EA 400
Gyro & integral motion sensor	Ixsea Hydrins III	Ixsea Octans 4	Ixsea Hydrins II	Ixsea Hydrins III
Sound Velocity Profiler	Reson SVP 14/15 or Valeport Mini SVP			
Sound Velocity Sensor	Valeport Mini SVS			
Positioning	Trimble SPS85x, C-Nav(optional)			
Workstation	Hydrographic Workstation with extra com-ports			
Software	QINSy			
Power	Generator 17 kW + 9 kW - UPS 2 kVA		Generator 7 kVA - UPS 2 kVA	

## Survey Equipment

The vessels are equipped with modern high tech survey systems. Most of the installed sensors are hull mounted. The benefit of hull mounted sensors is no speed reduction at survey or cruising speed. In the wheelhouse a dedicated survey desk is available for 2 persons. Extra equipment can be placed in the 19" rack under the survey desk.



Details on this specification are subject to change without notice.

